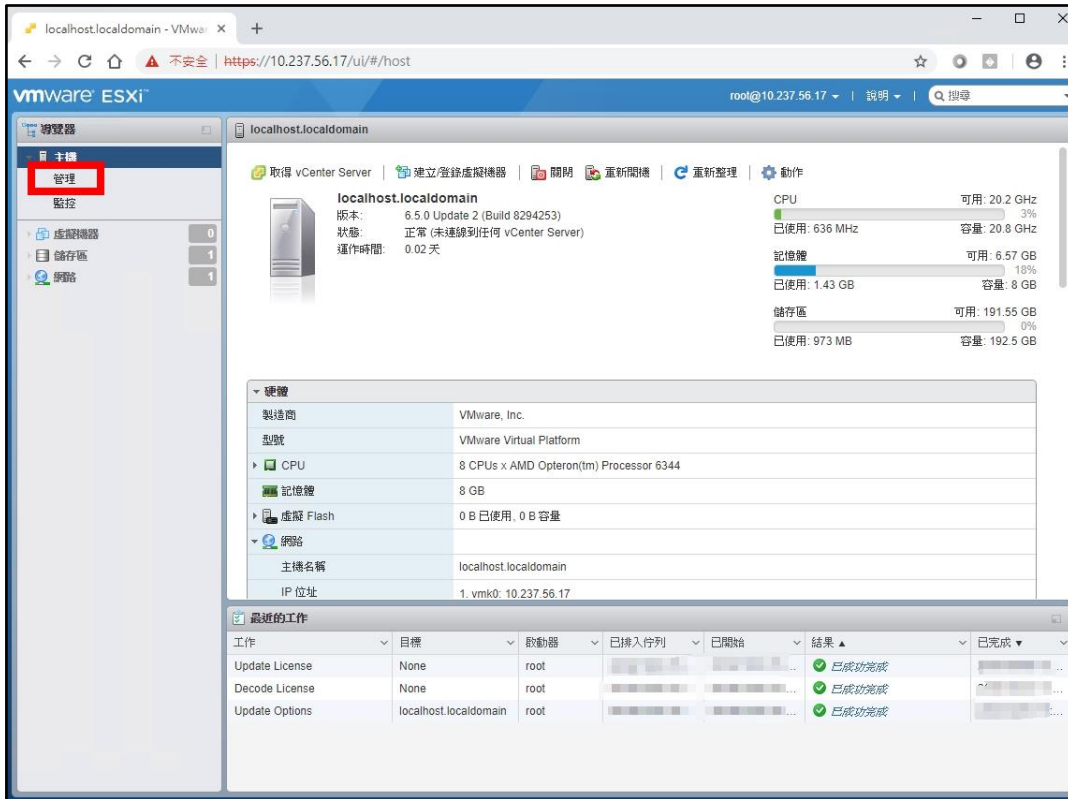
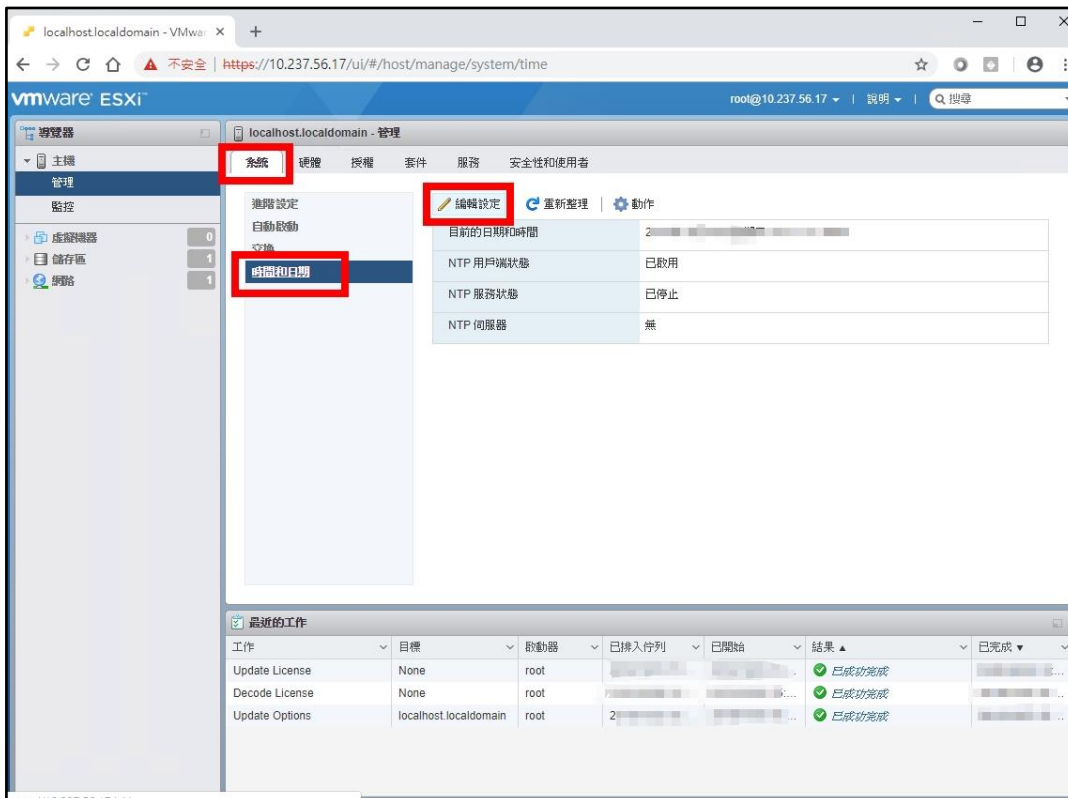


# 校時設定

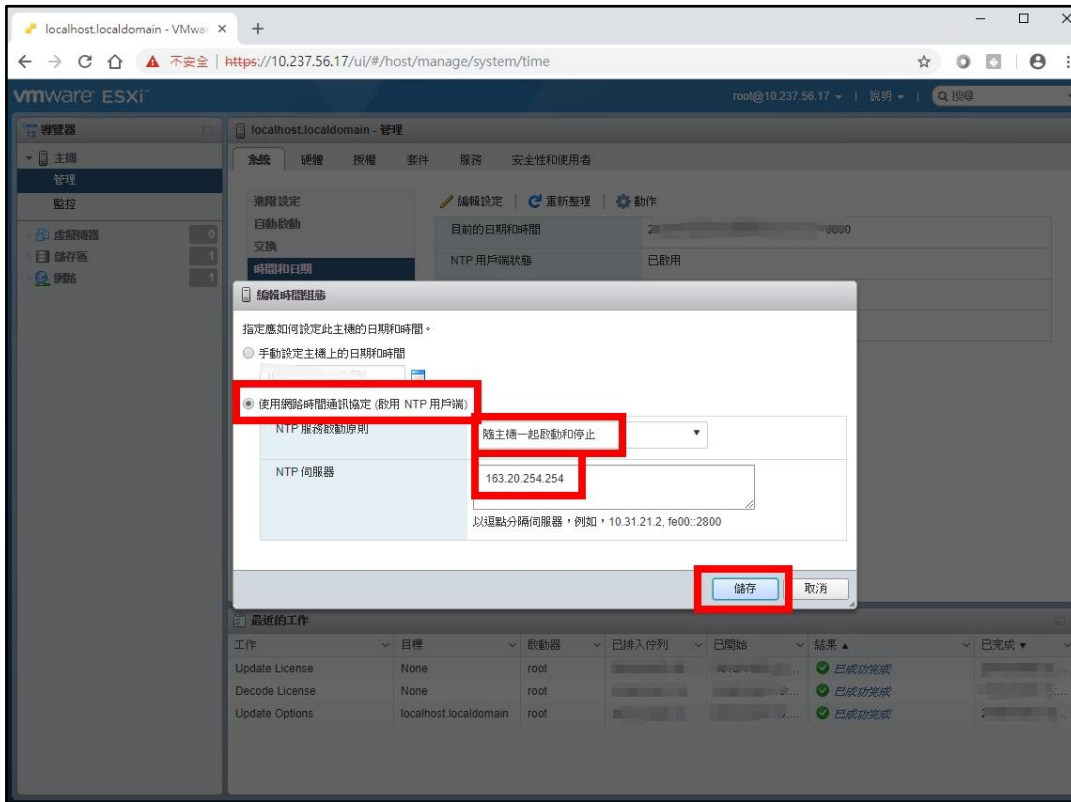
## 1. 點「管理」



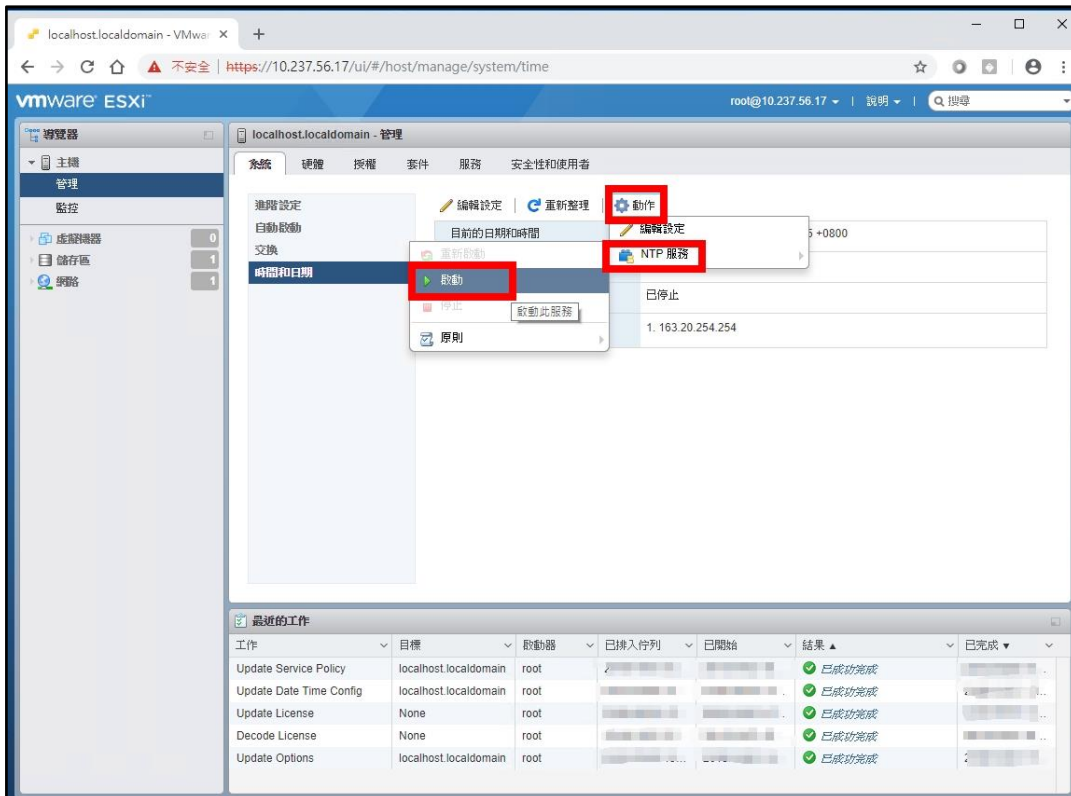
## 2. 點「系統」—「時間和日期」—「編輯設定」



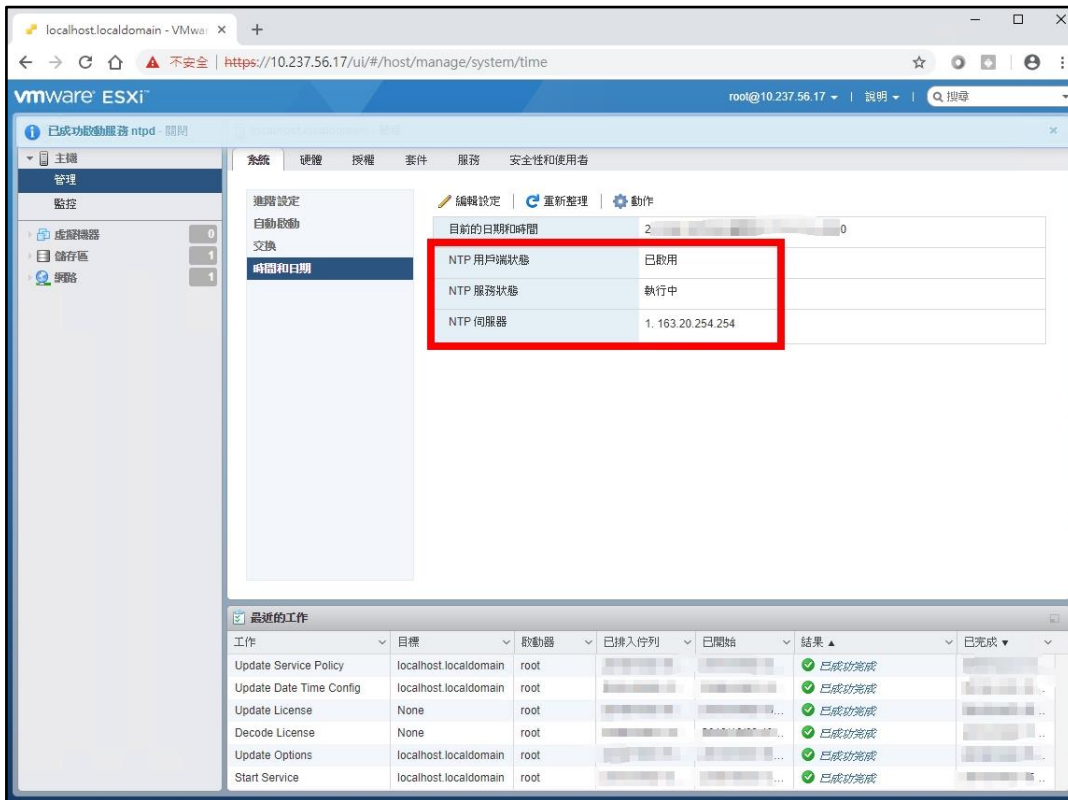
- 選「使用網路時間通訊協定(啟用 NTP 用戶端)」  
選「隨主機一起啟動和停止」，輸入 NTP 伺服器「163.20.254.254」  
點「儲存」



- 點「動作」－「NTP 服務」－「啟動」



## 5. 可看到 NTP 已啟用並執行中



The screenshot shows the VMware ESXi management interface. The main content area displays the '時間和日期' (Time and Date) configuration page. A table within this page shows the status of NTP services:

項目	狀態
NTP 用戶端狀態	已啟用
NTP 服務狀態	執行中
NTP 伺服器	1. 163.20.254.254

The table is highlighted with a red border. Below the configuration page, the '最近的工作' (Recent Tasks) section shows a list of completed tasks, including 'Update Date Time Config', all with a status of '已成功完成' (Successfully Completed).