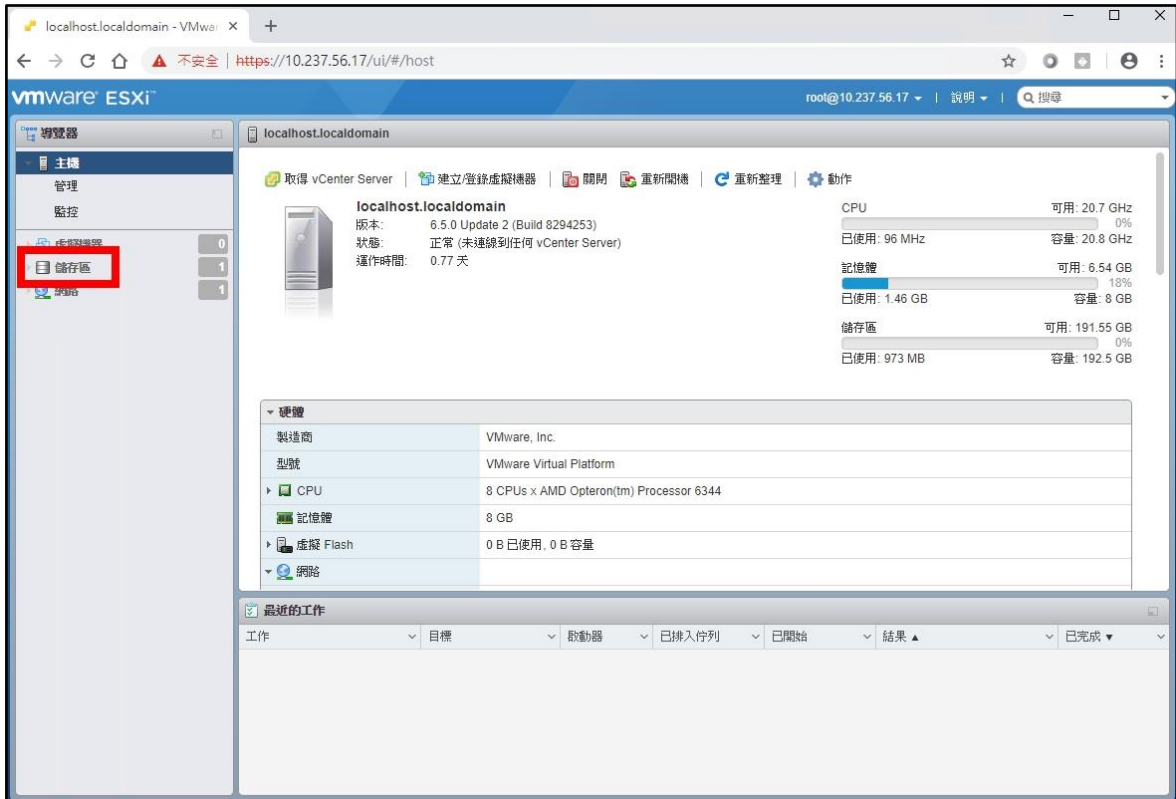
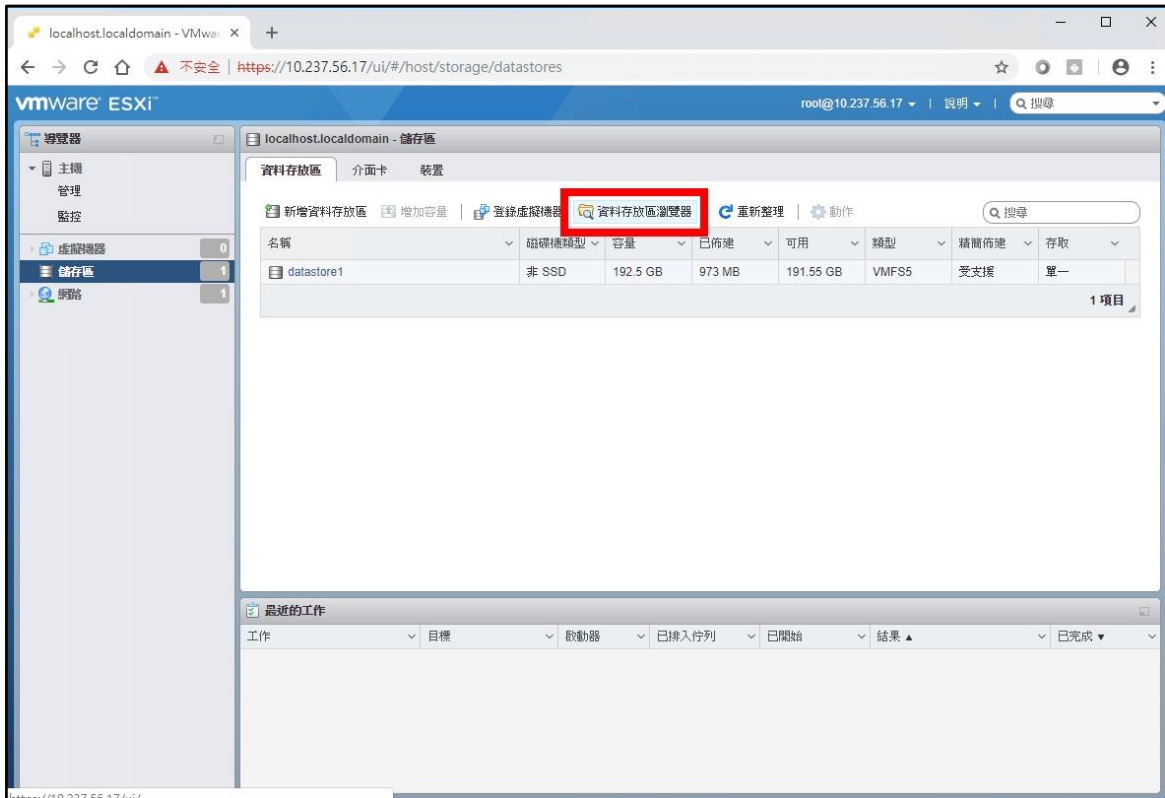


上傳檔案

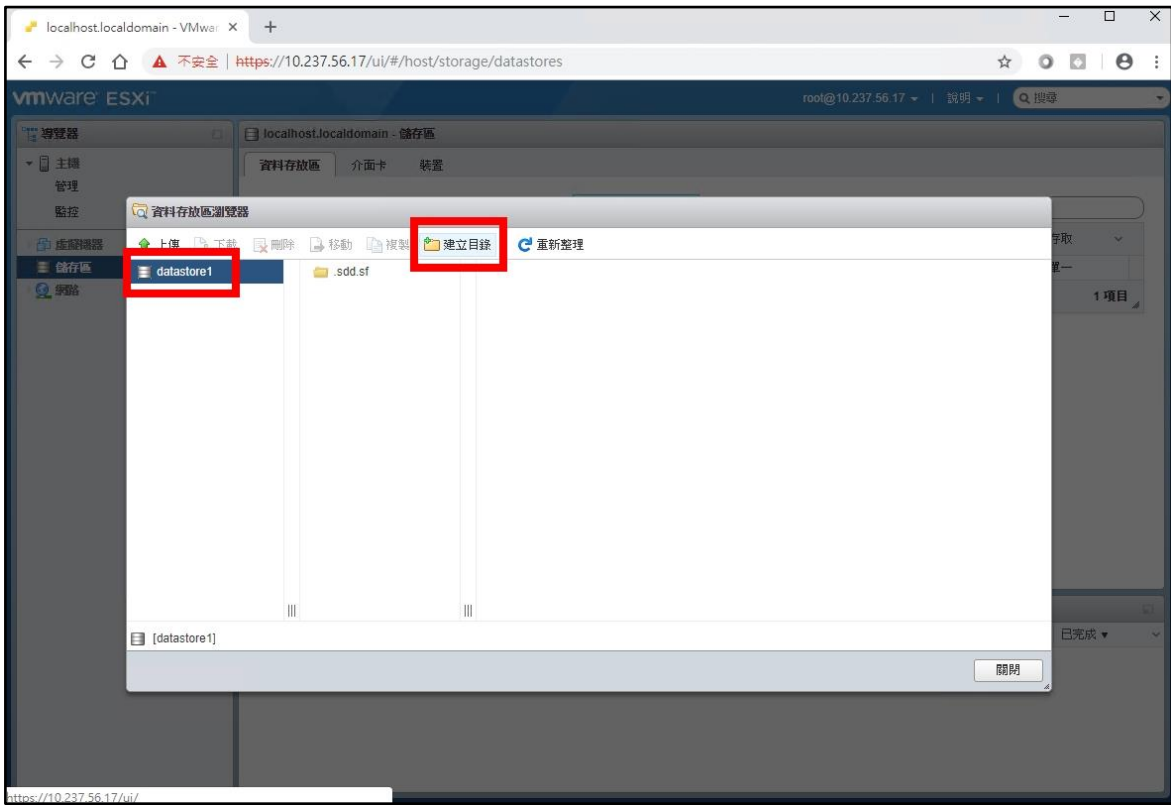
1. 點「儲存區」



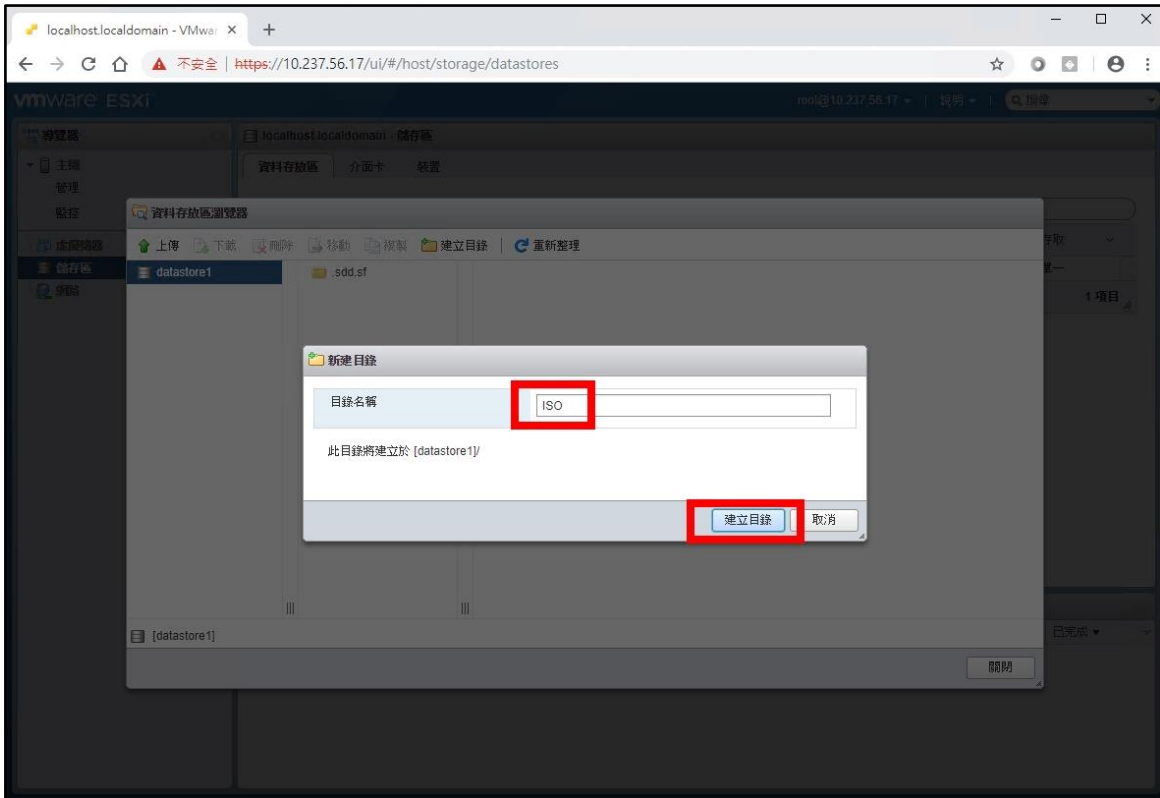
2. 點「資料存放區瀏覽器」



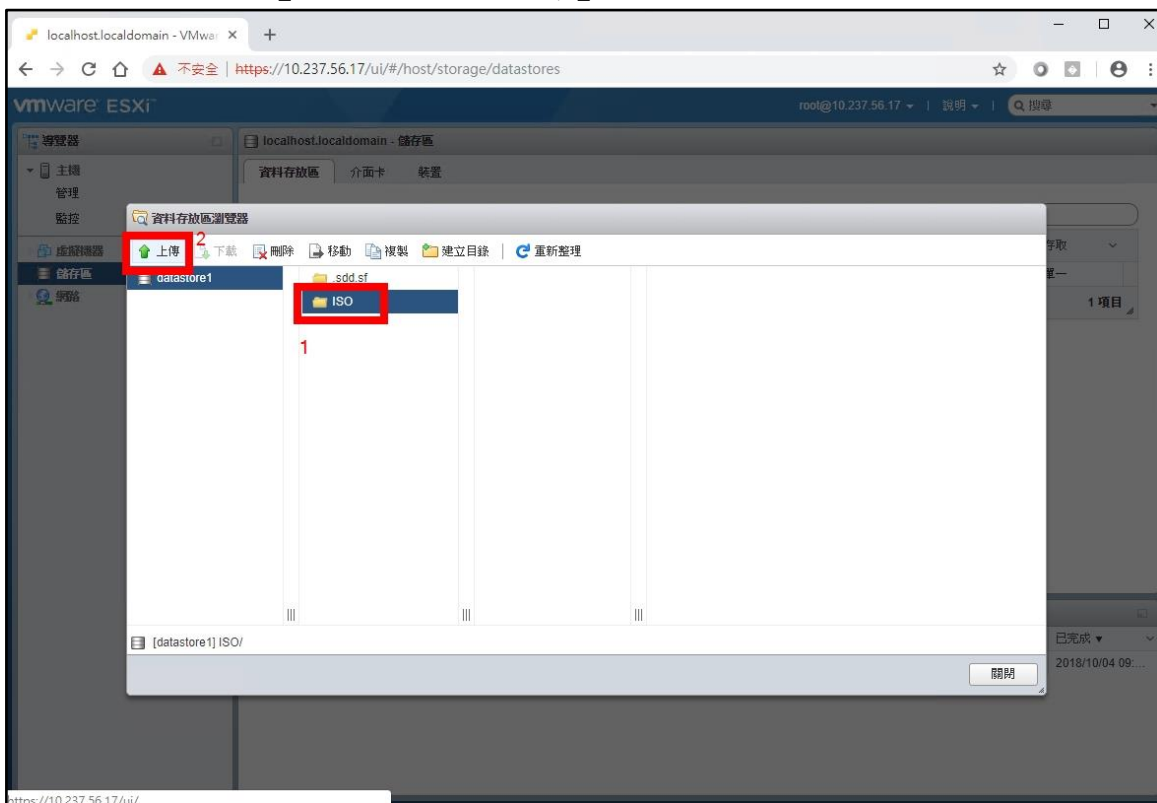
3. 點「datastore1」－「建立目錄」



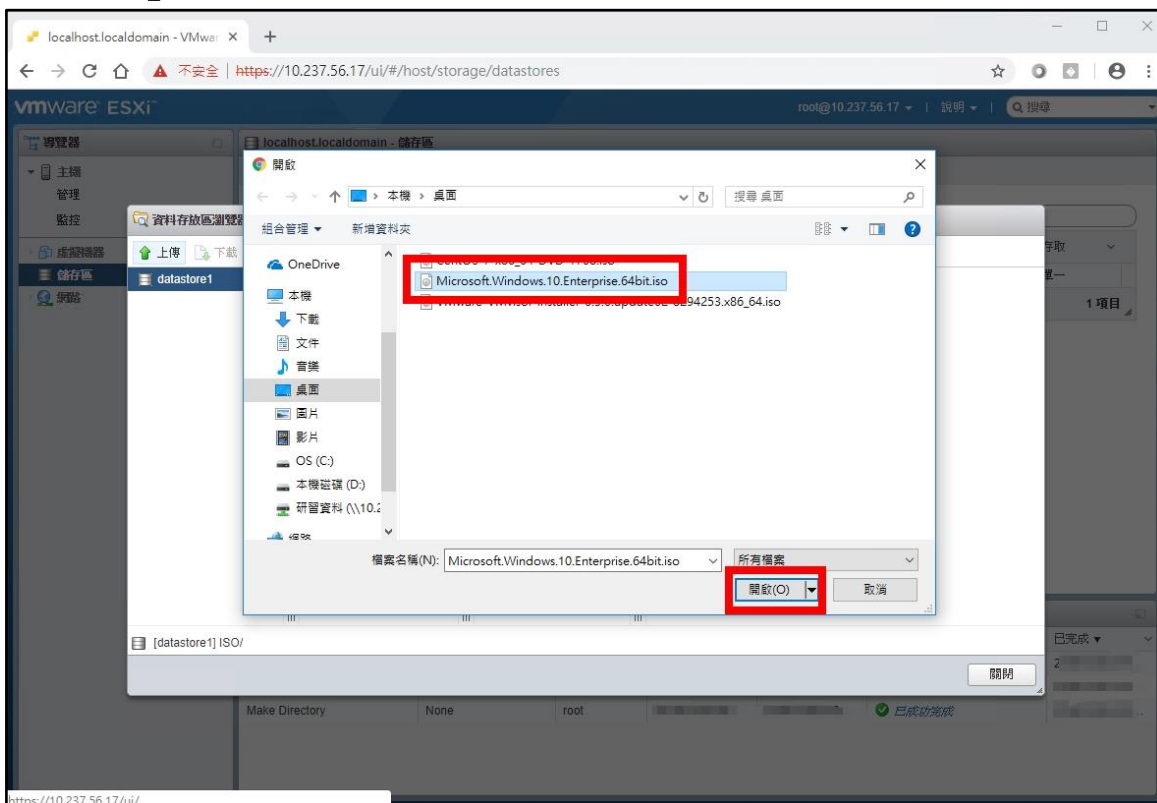
4. 目錄名稱輸入「ISO」，點「建立目錄」



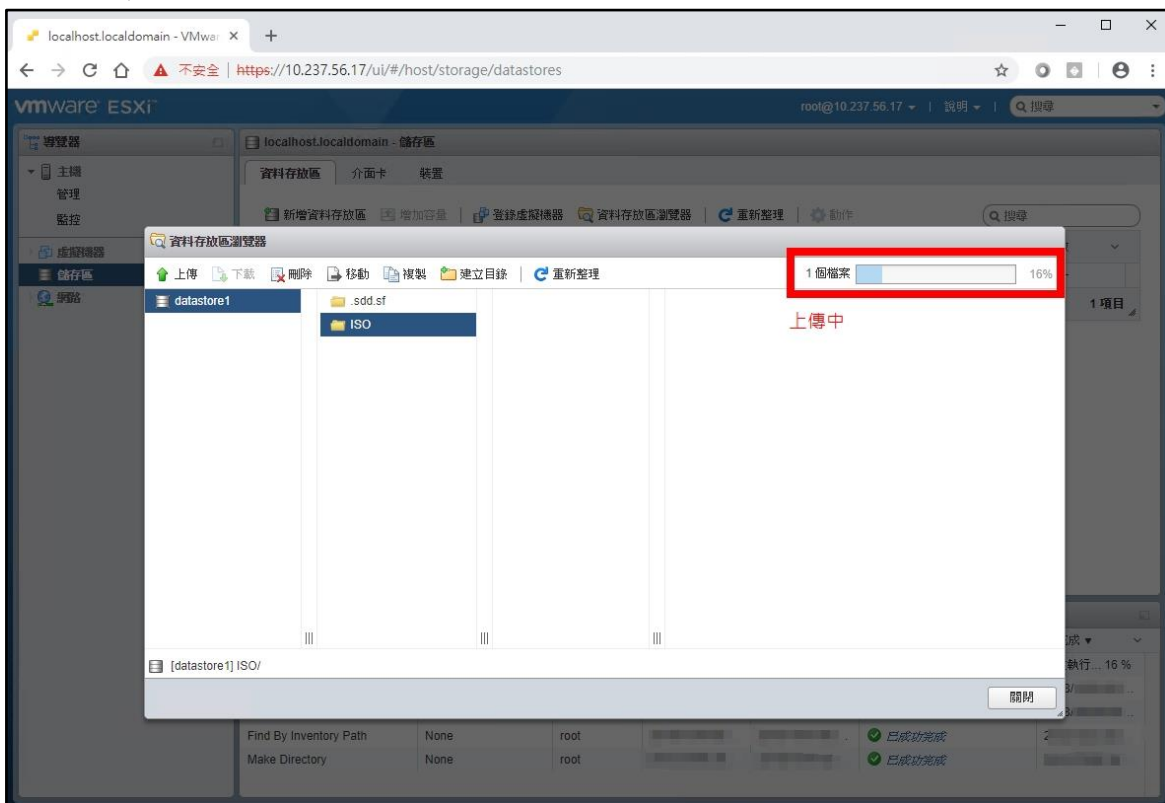
5. 點剛建立的「ISO」目錄，點「上傳」



6. 選擇桌面上的「Microsoft.Windows.10.Enterprise.64bit.iso」
點「開啟」



7. 開始上傳



8. 上傳完成，點「關閉」

